

Mansfield HS Band Auditions

It is time for the 2024-2025 MHS Band audition process. **Anyone currently enrolled in band is automatically accepted as a member of the Mansfield Tiger Band for 2024-2025.** This audition is for *class placement/schedule only*. Auditions will take place in the MHS band room, on May 6th and 7th. Each audition should take less than 5 minutes. Please sign up for an audition time using the appropriate link below.

Woodwinds:

<https://www.signupgenius.com/go/30E044BA9AE2EA4F49-48885668-2024>



Brass:

<https://www.signupgenius.com/go/30E044BA9AE2EA4F49-48885704-2024>



Section 1- Major/Minor scales:

All students will have **two minutes** to play as many major and minor scales in as many octaves possible. The scales need to be articulated ascending and slurred while descending. Tone, Speed, steady tempo, and number of octaves performed will be the major factors in scoring. Those who would like to be placed in a higher band should play the scales cleanly at one fast and **ONE steady tempo** for all the scales. Each scale will have a maximum of 5 points (per octave). Please only play the scales you have prepared. Scales should be played in the order they appear on the scale sheet. You can skip scales you are not prepared to play, but please go in the order they are printed. Before each scale- please verbally announce what scale you are playing. All scales should be played at a FORTE dynamic. (big/full and controlled sound)

Section 2- Chromatic Scale

All students will play the chromatic scale and demonstrate their range and technical abilities. Students should play this scale in a triplet pattern. Please tongue/articulate the scale ascending and slur descending. It is important to keep a steady and controlled tempo. A suggested range is listed below- however only play as high/low as you can with a beautiful and controlled tone. More points will be given to those who play the full range of the instrument, at a fast tempo, keep a steady beat, and play all notes with a beautiful and resonant tone. This section is worth 50 points

“Full Range” Suggestions:

Flute	C- C (three octaves)	All Saxes	Low C – High F (2+ octaves)
Oboe	C- C (two octaves)	Horns	Low C (bass clef) – High g (2+ octaves)
Bassoon	Bflat- Bflat (three octaves)	Trumpets	Low G – High C (2+ octaves)
Clarinets	Low E – High G (3+ octave)	All Low Brass	Low F- High B flat (2+ octaves)

Section 3- Musical excerpt(s):

These short excerpt(s) from next year’s opener can be played at one of three tempos. (we will have a metronome that will be used during your audition) The three tempos are MM=100, MM=125, MM=150. We are looking to see who can play correct rhythms (including rests) and play the correct notes and articulations. Please note the different articulations that are asked for. (Staccato, Legato, Marcato) Also be very careful to play the slurs and dynamics as printed. Those who play with a beautiful tone, faster and steady tempo, and are the most accurate will be awarded the most points. This section is worth 100 points. (This music can also be found at [mhsband.com](https://www.mhsband.com) > Audition material)

<https://www.mhsband.com/instrumental-auditions>

Alto and Bari Sax

2024 MHS Band Musical Excerpts

You will need to play each of these excerpts with a metronome. (A metronome will be provided at the audition.)

If there is a divis/split Please play the top notes. Tubas please play the bottom notes if there is a split/divisi.

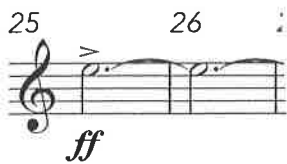
Your tempo choices are:

MM= 100 or MM=125 or MM=150

The focus should be to play all the correct notes, rhythms (including rests) and musical expressions (dynamics, slurs, accents, etc)

Those who play the most accurate, with a beautiful tone, and at faster tempos will score higher.

HOWEVER, the most important thing is to play it accurately with a beautiful/full tone. (do not sacrifice accuracy for speed...accuracy is always more important)



Alto Saxophone

Audition Scale Sheet

Concert F Major



concert d natural minor



Concert B-flat Major



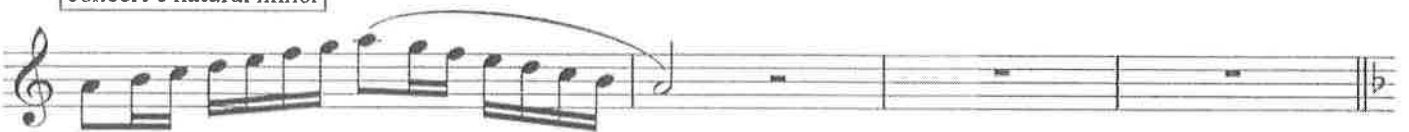
concert g natural minor



Concert E-flat Major



concert c natural minor



Concert A-flat Major



concert f natural minor

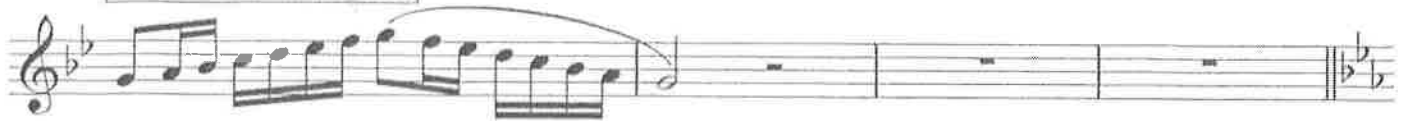


Concert D-flat Major



Alto Saxophone

concert b-flat natural minor



Concert G-flat Major



concert e-flat natural minor



Concert B/C-flat Major



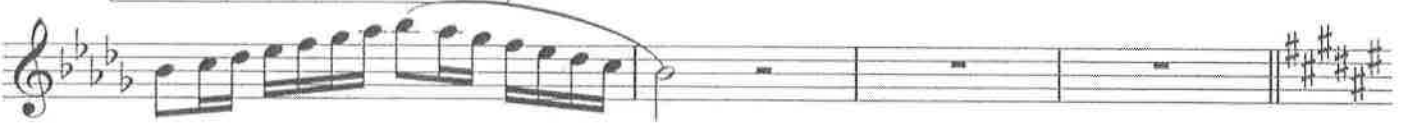
concert a-flat natural minor



Concert E/F-flat Major



concert c-sharp/d-flat natural minor



Concert A Major



concert f-sharp natural minor



Concert D Major



Alto Saxophone

concert b natural minor



Concert G Major



concert e natural minor



Concert C Major



concert a natural minor

